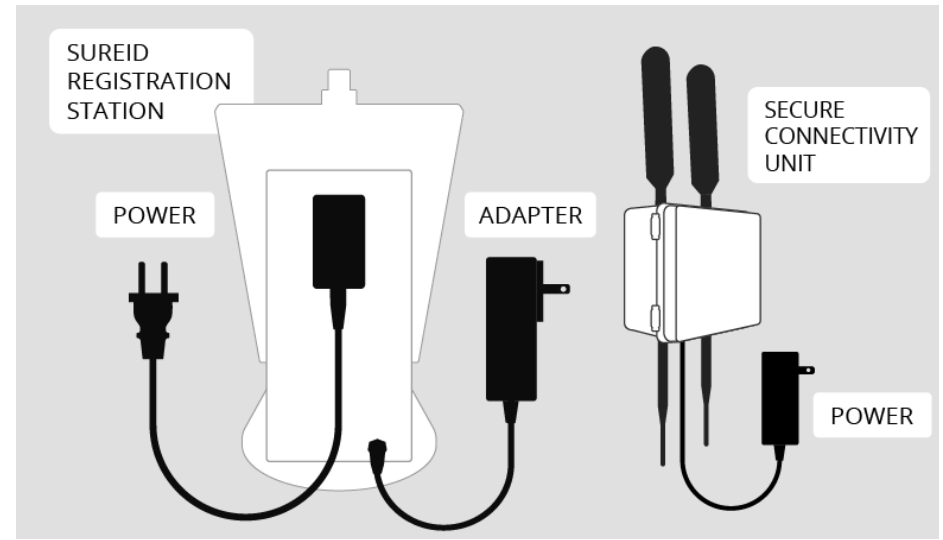
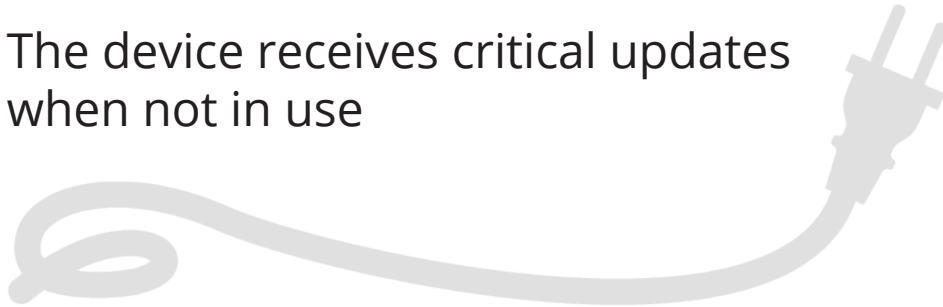
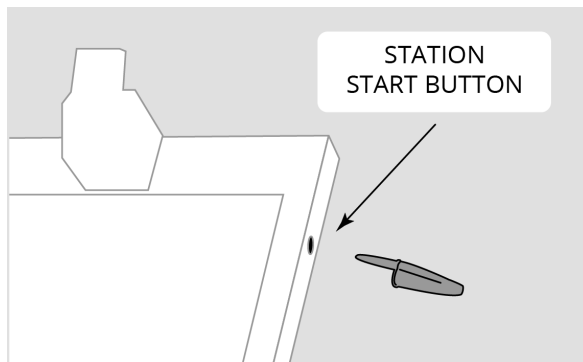


## Keep system plugged in and powered on!

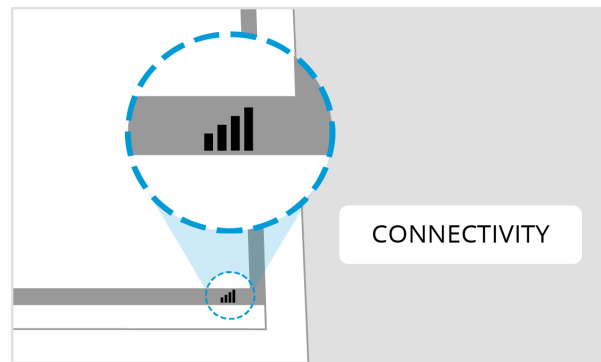
The device receives critical updates when not in use



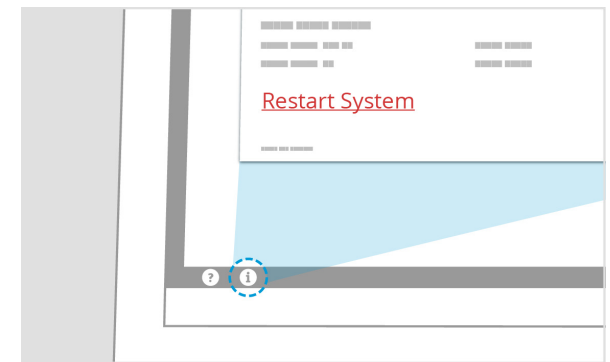
## System Troubleshooting



Press the start button with a non-sharp, non-pointed tool like a pen cap to turn on the station



Connectivity should be at least 3 bars. If less, call support (844-787-3431)



Tap the Info button, then Restart System to reboot the station

## Your Responsibilities

- 1** Keep all plugs on the SureID Registration Station and the connectivity unit plugged in to install software updates
- 2** Make sure all associates assisting customers have been fully trained on the equipment and fingerprinting processes
- 3** Properly ID all fingerprinting customers **and assist them** in capturing their fingerprints (no appointment required)
- 4** Keep the Station and the fingerprint scanner clean according to directions provided
- 5** Reach out to Support with any issues as soon as possible

## Programs We Support

### Individual Applicant

Also called Departmental Orders or DOs, this program allows individuals to get copies of their own FBI record. Reasons include

- Personal review
- Travel or student visas
- Adoptions

*Note: These copies cannot be used for employment or licensing purposes!*

### Financial Services

These programs allow financial organizations to get copies of FBI records for specific employees for background screening. Programs include

- FINRA (Financial Industry Regulatory Authority)

### Employment Background Check

These programs allow companies that have permissible purpose to screen employment candidates. Programs include

- Authorized Recipient federal criminal history background checks

### SWFT

The Secure Web Fingerprint Transmission (SWFT) program supports fingerprinting for people who need security clearance background checks per government regulations.

Call for assistance if fingerprinting takes more than 8 minutes  
SureID Support 844.787.3431